



SOARING











SPECIFICATIONS

Naval Architect:	ABEKING & RASMUSSEN
Exterior Designer:	Focus Yacht Design
Interior Designer:	Focus Yacht Design
Classification:	Lloyd's Register of Shipping (LRoS) Maritime Coastguard Agency (MCA)
Material of Hull:	Steel
Material of Superstructure:	Aluminium
Delivery:	2020

DIMENSIONS

Length over all:	68.20 m / 224 ft
Length d.w.l.:	61.40 m / 201 ft
Beam max.:	11.90 m / 39 ft
Draft max.:	3.50 m / 11.5 ft
Gross Tonnage:	1541 GT

TECHNICAL DETAILS

Cruising speed:	14.00 kn
Maximum speed:	16.20 kn
Range @ 13 kn min.:	4,500 nm
Fuel oil:	185 t
Fresh water:	39 t

ACCOMODATION

Owner:	1 x Owner's Area, 82 sqm
Guests:	4 x Double Cabin, each 20 sqm 1 x VIP Cabin, 33 sqm Maximum Guest Capacity 12
Captain:	1 x Double Cabin, 16 sqm
Crew:	17 x Berths, 87 sqm

Total living areas	
Owner and Guests:	471 sqm
Crew:	336 sqm

PROPULSION SYSTEM

Main Engines:	2 x MTU
Type:	12V 4000 M65R
Continuous Rating:	1492 kW @ 1600 rpm
Gear Box:	ZF
Propellers:	5 bladed fixed pitch
Main Generators:	2 x Caterpillar
Type:	C18, 1500 RPM, 383 kW
Emergency Generator	1 x CATERPILLAR
Type:	C7.1, 1500 RPM, 130 kW

TECHNICAL OUTFITTING

Bow thruster:	1 x SCHOTTEL tunnel thruster, diameter approx. 790 mm, Electric motor: approx. 185 kW the bow thruster is frequency controlled
Stern thruster:	1 x SCHOTTEL Pump Jet Electric motor: approx. 200 kW
Stabilisers:	One pair of non-retractable zero-speed active fin stabilizers, Type: NAIAD 820 DATUM CONTROL
Anchor capstans:	2 x vertical anchor capstans electrically driven with two speed remote control
Mooring capstans:	2 x vertical mooring capstans electrically driven
Accommodation ladder:	On Main Deck, a loose carbon fibre ladder with self-levelling steps and low voltage step-lighting
Riviera gangway:	Electric/hydraulic/telescopic gangway (= passerelle)
Water maker:	Duplex reverse osmosis water-maker H.E.M.® Total approx. 30000 litres/day
Sewage System:	A biological sewage treatment plant compliant with MEPC227/64 will be installed

ELECTRONICS

Communication System:	1 x SSB Sailor 6310 System: 2 x Sailor VHF RT 6222
Radar:	2 x Synapsis NX /NAUTOSCAN 25 kW X-band NAUTOSCAN 30KW S-band
Autopilot:	NAUTOSTEER AS
DGPS:	2 x R5 DGNSS Receiver with antenna
Gyrocompass System:	1 x RAYTHEON ANSCHÜTZ Standard 22 GG
Inmarsat – C:	2 x INM Mini-C 6110; one with LRIT functionality, one with SSAS add on kid.
Inmarsat – F:	1 x Fleet Broadband 500
Entertainment:	Music & Video on demand (Owner's supply)
Computer system:	Server & network (Owner's supply)
Telephone system:	Panasonic KX-NS0154, with GSM & Shore connection (Owner's supply)
Intercom system:	PHONETECH CIS 3100
Navtex:	FURUNO NX-700A WITH PRINTER
Log:	EML 224 DUAL AXIS
Sea Chart:	2 Synapsis NX workstations

SAFETY AND SECURITY

Safety:	Automatic watertight doors as necessary for watertight compartments MCA compliant safety installations and equipment
Firefighting:	A Minimax sprinkler system will be provided
Alarms:	Addressable fire alarm and monitoring system with smoke detector in state rooms, cabins, general areas Maximum heat detector in galley. Smoke and flame detectors in engine room

TENDER LAUNCHING SYSTEM

Tenders and toys are stowed on Main Deck forward on boat chocks as per GAP.
When side shell doors are open, the launching of the tenders will be carried out by a gantry crane system.

Design criteria for the tender:	Tender launching system and capacity designed for:
Starboard:	L x B: 9.5 m x 2.8 m H: 1.75 m (below crane beam) weight max. 4.5 t
Port:	L x B: 7.5 m x 2.5 m H: 1.75 m (below crane beam) weight max. 2.5 t
Rescue Boat crane:	One hydraulic crane for lifting of rescue boat on / off the yacht Crane designed according to MCA and CS requirements. Crane SWL 2000 kg
Rescue Boat (OS):	1 x Pascoe Rescue boat, 5.5 m fuel inboard engine.

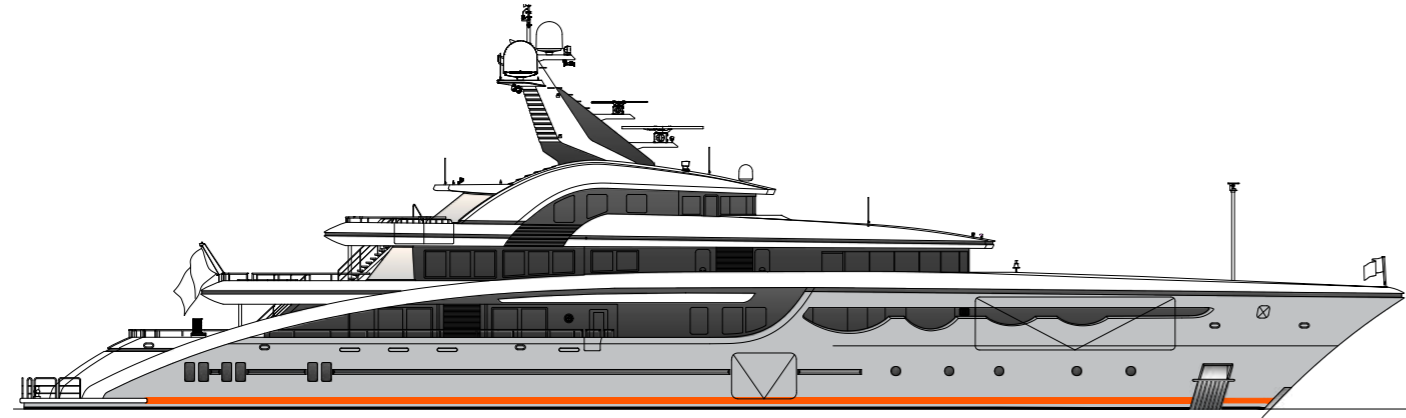


ABEKING & RASMUSSEN
Schiffs- und Yachtwerft SE

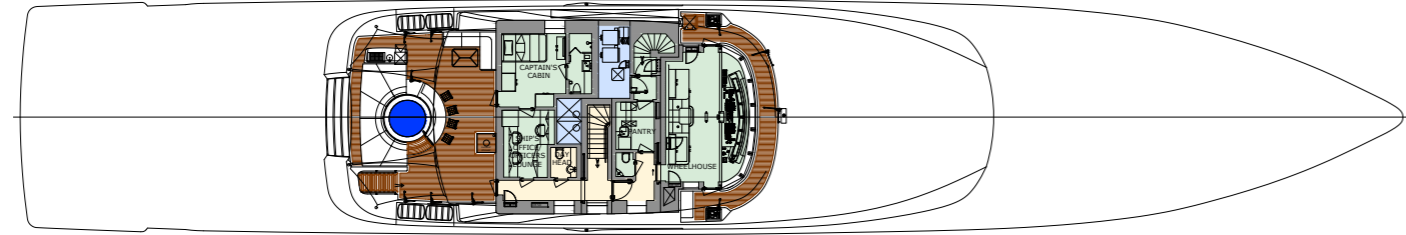
An der Fähre 2 | 27809 Lemwerder | Germany
P +49 421 - 67 33 0 | info@abeking.com

www.abeking.com

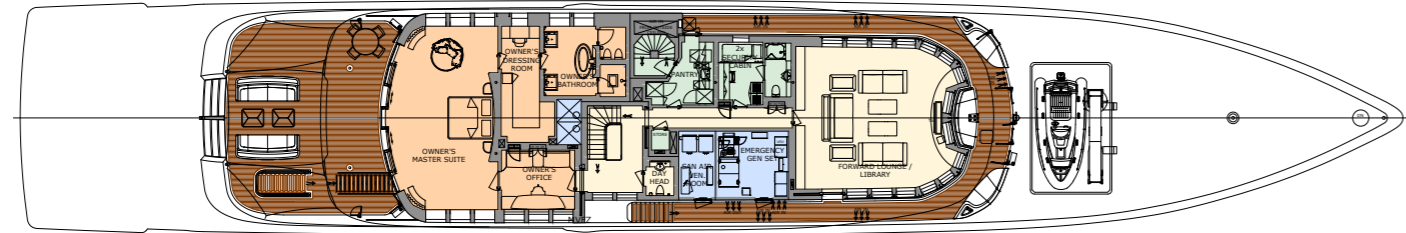
BRIDGE DECK
OWNERS DECK
MAIN DECK
LOWER DECK
TANK DECK



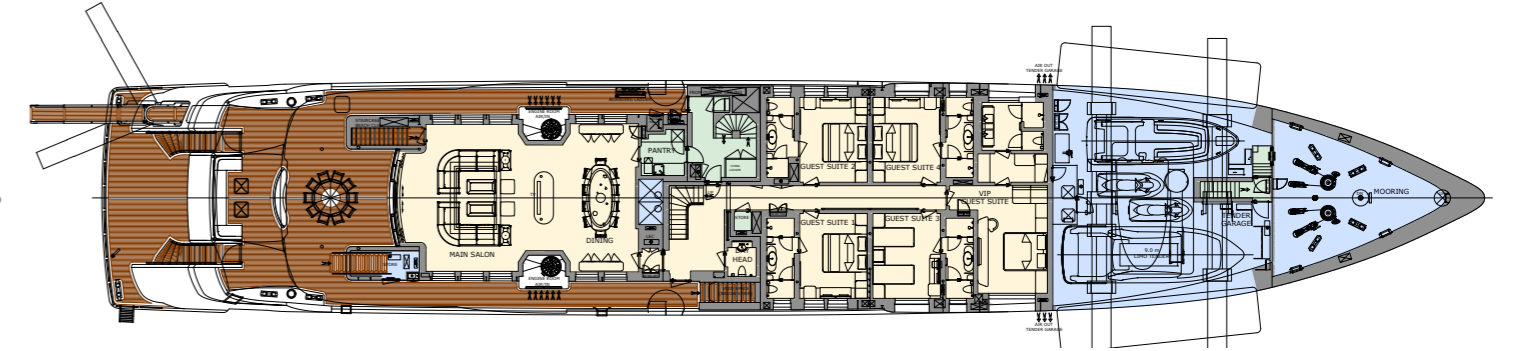
BRIDGE DECK



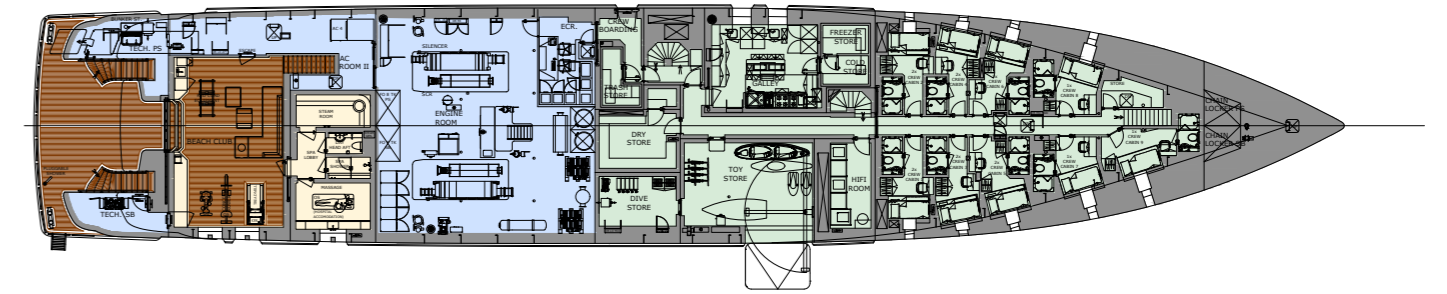
OWNERS DECK



MAIN DECK



LOWER DECK



TANK DECK

