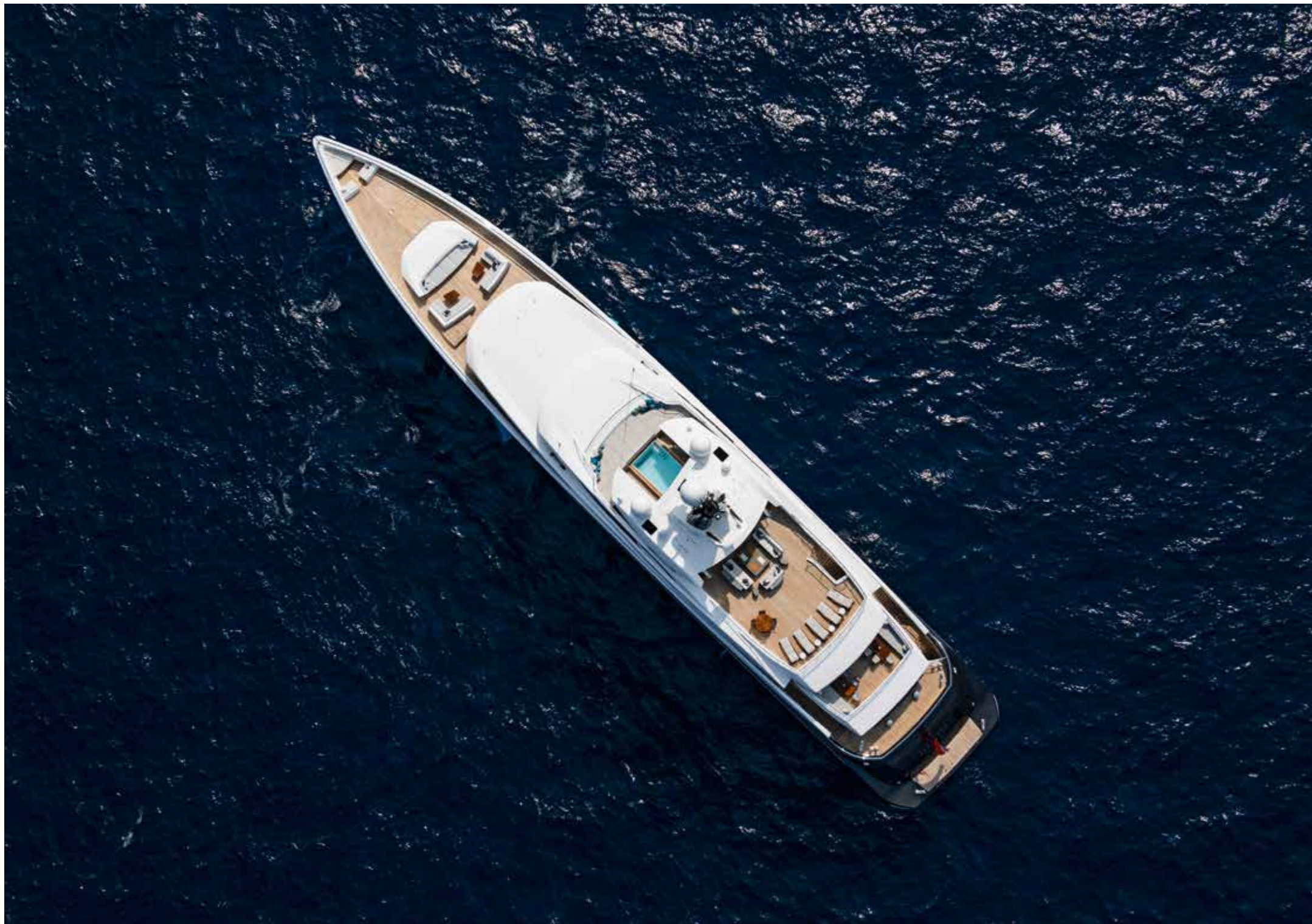


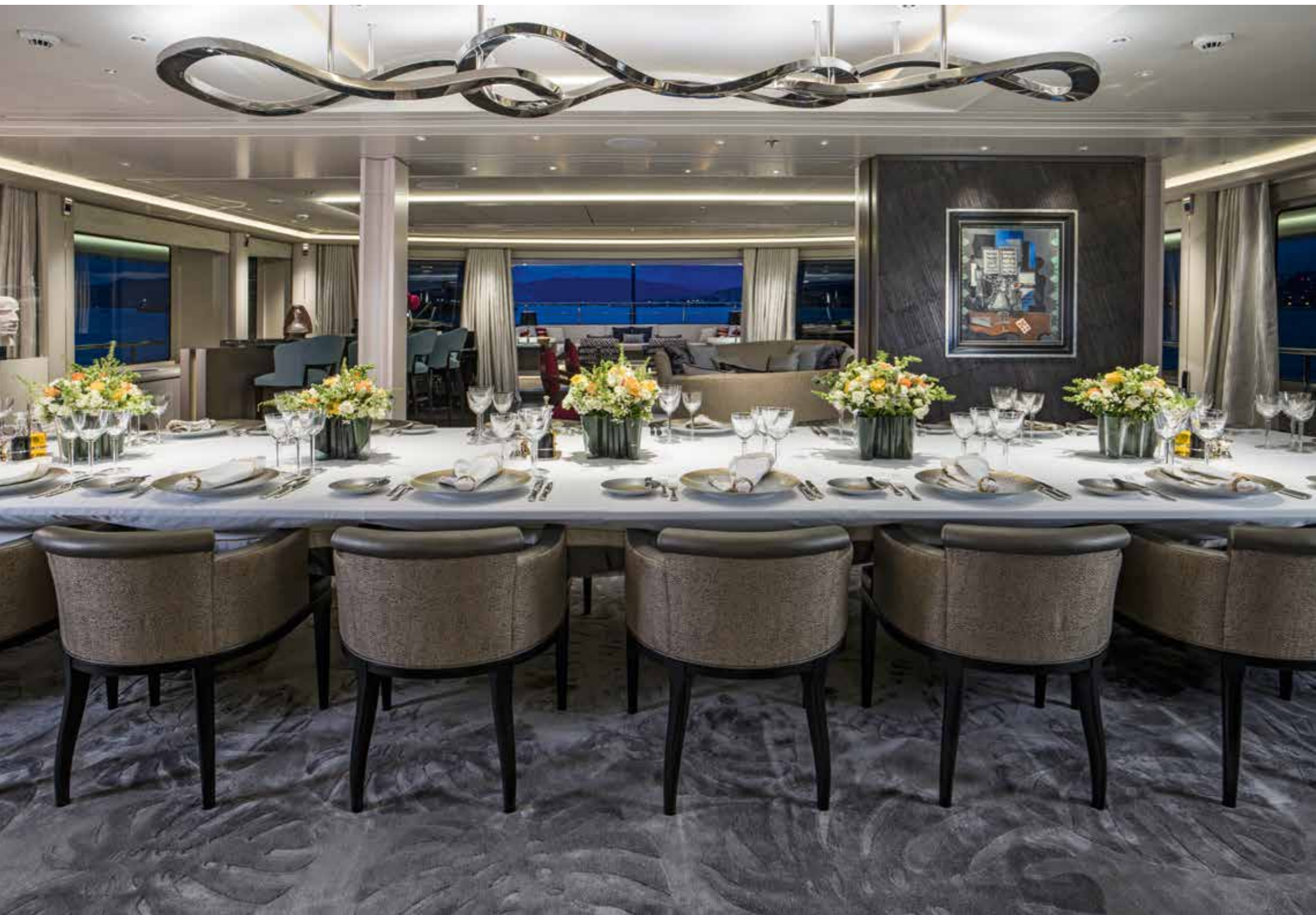


ELANDESS











SPECIFICATIONS

Hull type:	Twin Screw Motor Yacht
Naval Architect:	ABEKING & RASMUSSEN
Exterior Designer:	Harrison Eidsgaard
Interior Designer:	Harrison Eidsgaard
Classification:	Lloyd's Register of Shipping (LRoS) Maritime Coastguard Agency (MCA)
Material of Hull:	Steel
Material of Superstructure:	Aluminium

DIMENSIONS

Length over all:	74.50 m / 244 ft
Length d.w.l.:	73.50 m / 241 ft
Beam max.:	12.80 m / 42 ft
Draft:	3.45 m / 11 ft
Gross Tonnage	2059 GT

TECHNICAL DETAILS

Cruising speed:	14,00 kn
Maximum speed:	16,50 kn
Range @ 13 kn:	6000 nm
Fuel oil:	150 t
Fresh water:	30 t
Lubrication oil:	3.0 t

PROPULSION SYSTEM

Main Engines:	2 x CATERPILLAR
Type:	3516 C DI – TA S.C.A.C. Series II
Continuous Rating:	1492 kW @ 1600 rpm
Gear Box:	REINTJES
Propellers:	5 bladed fixed pitch
Main Generators:	3 x CATERPILLAR
Type:	C18 SCAC, 1500 RPM, 438 kW
Emergency Generator	1 x MAN
Type:	D2866 LXE 20, 1500 RPM, 270 kW

TECHNICAL OUTFITTING

Bow thruster:	1 x BRUNVOLL low noise tunnel thruster, Electric motor: approx. 240 kW The bow thruster is frequency controlled
Stern thruster	1 x VOITH SWING OUT AZIMUTH RIM DRIVE THRUSTER Electric motor: approx. 200 kW
Stabilisers:	2 x pair of non-retractable active fin stabilizers Type: QUANTUM MARINE
Anchor capstans:	2 x vertical anchor capstans electrically driven with two speed remote control
Mooring capstans:	4 x vertical mooring capstans electrically driven
Elevators:	1 x elevator (4 persons) 1 x food lift
Accommodation ladder:	On Main Deck recessed in bulwark on starboard: Fully electric/hydraulic accommodation ladder with self-levelling teak steps including integrated low voltage step lighting
Riviera gangway:	Electric/hydraulic/telescopic gangway (= passerelle)
Water maker:	Duplex reverse osmosis water-maker H.E.M.@ Total approx. 44000 litres/day
Sewage System:	All grey- and black-water can be treated in biological waste water treatment plant. System compliant with IMO MEPC 159(55).
Pool:	As shown on the GAP

ACCOMMODATION

Owner:	1 x Owner´s Area, 100 sqm
Guests:	6 x Double Cabin, each 22 sqm 1 x Multipurpose Cabin, 10 sqm
Captain:	1 x Double Cabin, 17 sqm
Crew:	17 x Berths, 150 sqm

TOTAL LIVING AREAS

Owner and Guests:	619 sqm
Crew:	392 sqm

ELECTRONICS

Communication System:	1 x SSB Sailor 6310 2 x Sailor VHF RT 6222 2 x portable VHF Airband ICOM IC-A6E 1 x RAYTHEON X-Band 8ft, 1 x RAYTHEON S-Band 12 ft NautoScan NX
Radar:	RAYTHEON NAUTAPILOT 5400 WITH TRACKCONTROL
Autopilot:	2 x SAAB R5
DGPS:	1 x RAYTHEON ANSCHÜTZ Standard 22 GG/GGM
Gyrocompass System:	2 x INM mini-C 6110 incl LRIT and SSAS
Inmarsat – C:	1 x Fleet Broadband 500
Inmarsat – F:	Music & Video on demand (Owner´s supply)
Entertainment:	Server & network (Owner´s supply)
Computer system:	PANASONIC, with GSM & Shore connection (Owner´s supply)
Telephone system:	PHONETECH CIS 3100
Intercom system:	FURUNO NX-700A WITH PRINTER
Navtex:	SKIPPER EML 224 dual axis Water track log
Log:	OBSERVATOR OMC-140
Windsensors:	2 x RAYTHEON Synapsis ECDIS with overlay
Sea Chart:	

SAFETY AND SECURITY

Safety:	Automatic watertight doors as necessary for watertight compartments. MCA compliant safety installations and equipment
Firefighting:	Highfog MARIOFF high pressure water mist system for protection of the complete inside accommodation. System is operated by freshwater.
Alarms:	Addressable fire alarm and monitoring system with smoke detector in state rooms, cabins, general areas. Maximum heat detector in galley. Smoke and flame detectors in engine room.
Video Survey System:	9 cameras and 2 monitors

TENDER LAUNCHING SYSTEM

Tenders and toys are stowed on Lower Deck aft and on Main Deck fwd as per GAP.

Lower Deck: Main tender launching by sliding cradle angled down into the water.

Main Deck: Launching 2nd tender and rescue boat carried out by gantry crane
system. Beams operated by electric motors, wireless remote controlled.

DESIGN CRITERIA

Main Tender:	L x B:	10.0 m x 3.0 m
	H:	1.85 m (below crane beam) weight max. 6.5 t
2nd Tender:	L x B:	7.5 m x 2.5 m
	H:	1.75 m (below crane beam) weight max. 4 t
Rescue Boat:	L x B:	5.5 m x 2.5 m
	H:	1.75 m (below crane beam) weight max. 2 t



ABEKING & RASMUSSEN
Schiffs- und Yachtwerft SE

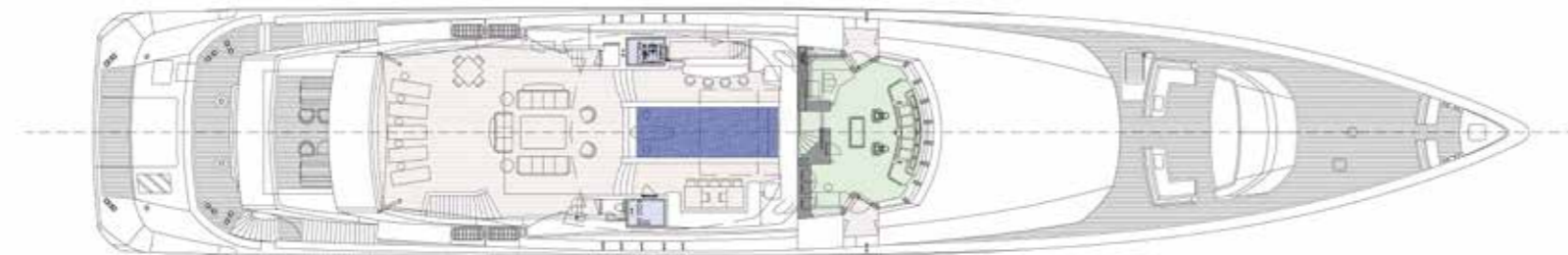
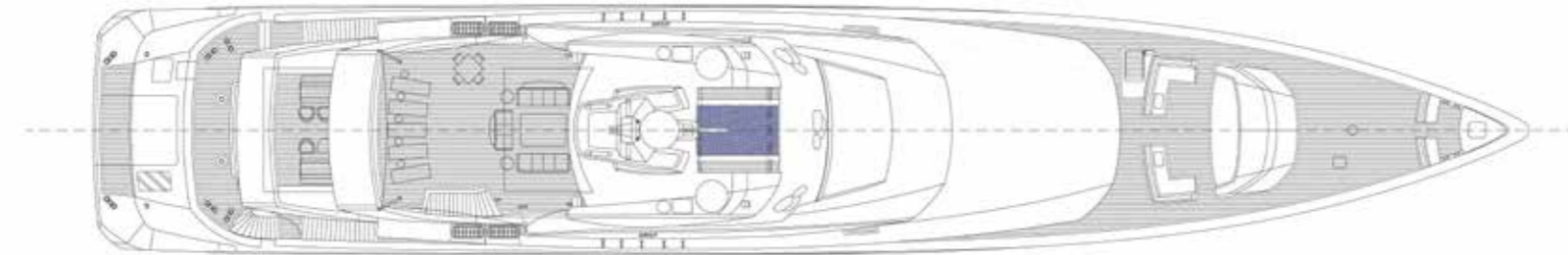
An der Fähre 2 | 27809 Lemwerder | Germany
P +49 421 - 67 33 0 | info@abeking.com

www.abeking.com

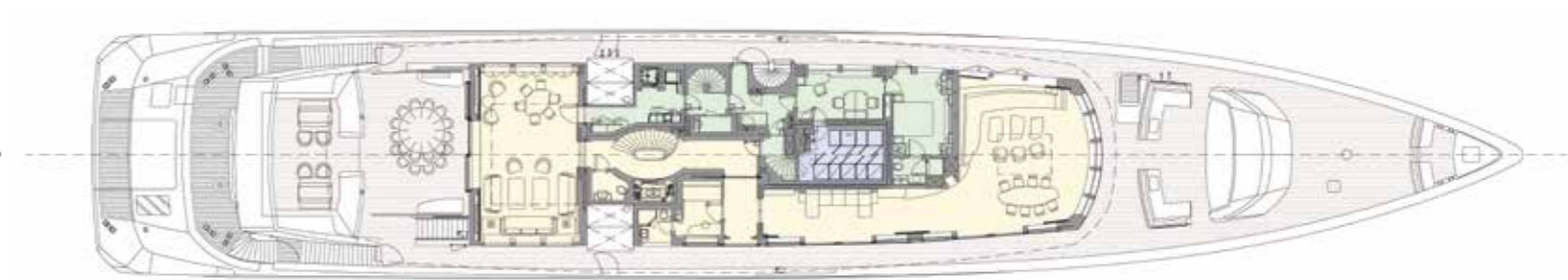
POOL DECK
SUN DECK
WHEELHOUSE
UPPER DECK
MAIN DECK
LOWER DECK



SUN & POOL DECK /
WHEELHOUSE



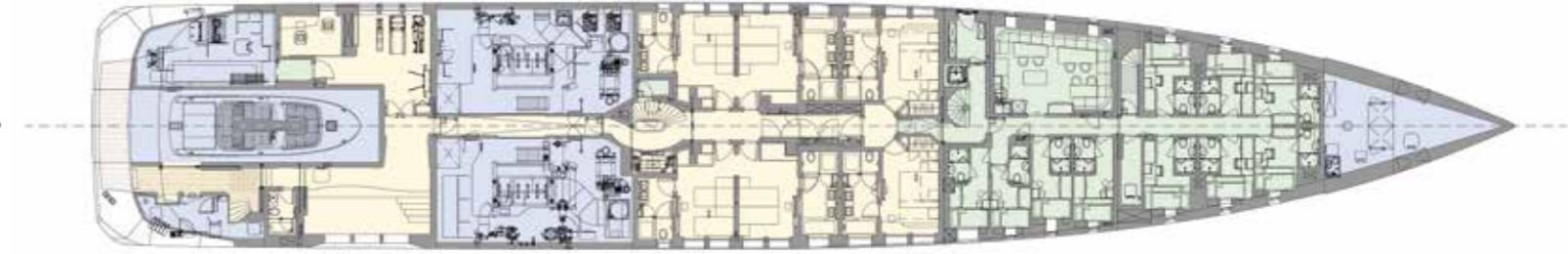
UPPER DECK



MAIN DECK



LOWER DECK



TANK DECK

